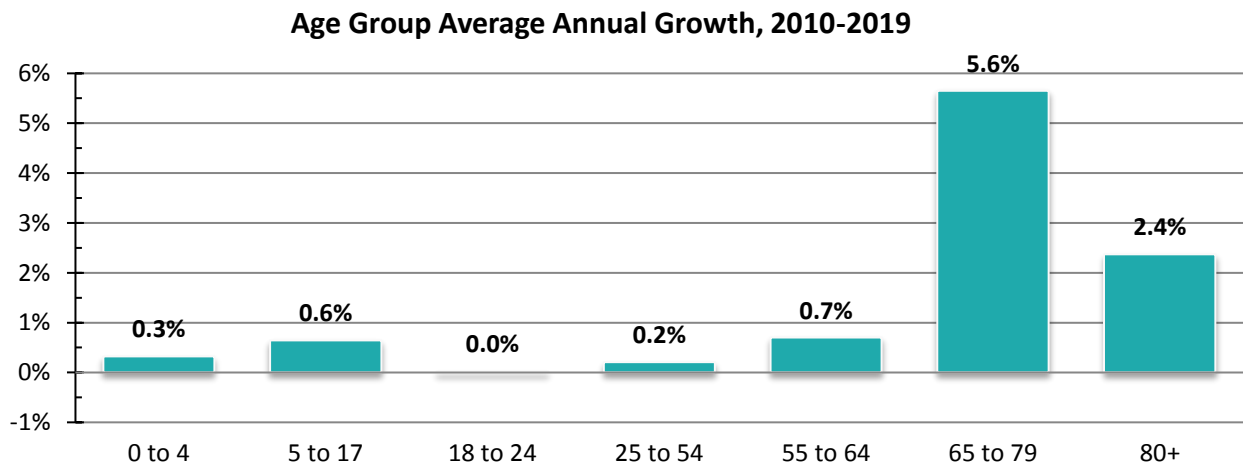


Trend: Although the 65-79 age group represents 10.6% of Leon County's total population, it is the fastest growing age group, growing at an annual rate of nearly 6% per year during 2010-2019.

Age Group	2010 Population	2019 Population Estimate	Growth in Population 2010-2019	Percent Growth 2010-2019	Avg. Ann. Growth 2010-2019
0 to 4	15,350	15,803	453	2.9%	0.3%
5 to 17	38,623	40,927	2,304	5.8%	0.6%
18 to 24	61,897	62,028	131	0.2%	0.0%
25 to 54	103,907	105,869	1,962	1.9%	0.2%
55 to 64	29,730	31,662	1,932	6.3%	0.7%
65 to 79	18,962	31,525	12,563	50.8%	5.6%
80+	7,018	8,685	1,667	21.3%	2.4%
Total	275,487	284,443	8,956	3.2%	0.4%

Age Dependency Ratio* **40.9** **48.6**

*Ratio of population under age 18 and those age 65 and older, compared to population ages 18-64.



Source: University of Florida, Bureau of Economic & Business Research, "Florida Population Studies, Bulletin 187", June 2020