

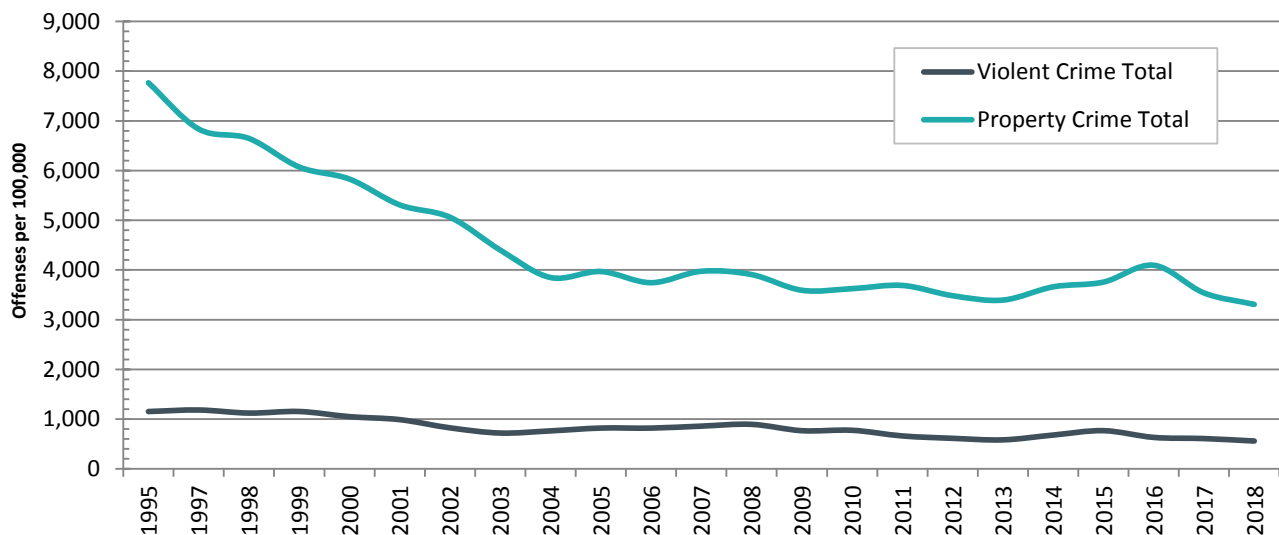
Trend: On a per capita basis, the overall frequency of property and violent crimes in the Tallahassee MSA in the 2010s has been lower than during the 1990s.

Year	Violent Crime					Property Crime			
	Murder and non-negligent manslaughter	Forcible sex offenses	Robbery	Aggravated assault	<i>Violent Crime Total</i>	Burglary	Larceny-theft	Motor vehicle theft	<i>Property Crime Total</i>
1995	7.4	68.4	321.1	755.3	1,152.3	1,717.9	5,425.8	621.6	7,765.3
1996	-	-	-	-	-	-	-	-	-
1997	4.5	72.5	268.0	838.1	1,183.1	1,316.5	5,034.4	484.1	6,835.0
1998	4.1	58.1	266.9	792.0	1,121.1	1,533.9	4,645.8	465.9	6,645.7
1999	3.4	79.4	241.6	828.5	1,153.0	1,422.3	4,106.4	541.9	6,070.6
2000	4.7	66.2	212.4	765.8	1,049.1	1,475.7	3,946.7	405.8	5,828.2
2001	4.8	70.9	211.4	701.9	989.0	1,353.5	3,526.4	428.9	5,308.8
2002	4.7	77.3	176.8	565.3	824.1	1,271.7	3,416.2	372.0	5,060.0
2003	3.6	71.3	138.4	506.2	719.4	1,146.9	2,931.7	321.7	4,400.2
2004	5.7	76.1	129.5	552.0	763.2	1,259.7	2,245.8	342.2	3,847.7
2005	5.9	62.8	155.1	595.9	819.7	1,249.0	2,409.3	310.2	3,968.5
2006	3.2	70.2	171.2	574.4	819.0	1,142.6	2,323.4	277.8	3,743.8
2007	2.4	61.0	217.3	578.1	858.8	1,309.4	2,375.7	288.7	3,973.9
2008	4.3	51.7	226.1	612.4	894.5	1,331.7	2,363.3	212.5	3,907.5
2009	3.6	46.6	166.9	549.7	766.8	1,341.0	2,109.2	141.5	3,591.7
2010	5.2	50.3	162.4	557.0	774.9	1,181.0	2,291.2	152.2	3,624.4
2011	4.8	42.2	167.6	446.5	661.1	1,247.0	2,295.3	146.3	3,688.6
2012	5.9	44.0	163.3	400.2	613.4	1,088.3	2,202.8	190.8	3,481.8
2013	4.5	58.9	120.1	398.8	582.3	859.7	2,374.2	160.2	3,394.1
2014	4.8	70.2	93.8	510.3	679.2	941.6	2,479.1	240.2	3,660.9
2015	6.6	80.9	122.3	557.2	767.1	832.7	2,602.3	321.3	3,756.3
2016	4.5	74.6	127.5	425.0	631.6	871.1	2,869.0	355.4	4,095.4
2017	6.5	75.0	107.7	419.1	608.4	662.3	2,620.8	254.9	3,538.0
2018	7.0	73.1	99.6	379.1	558.9	593.7	2,443.3	270.6	3,307.6

Note: Offenses per 100,000. Property crimes include burglary, larceny, and motor vehicle theft. Violent crimes include murder, forcible sex offenses, robbery, and aggravated assault.

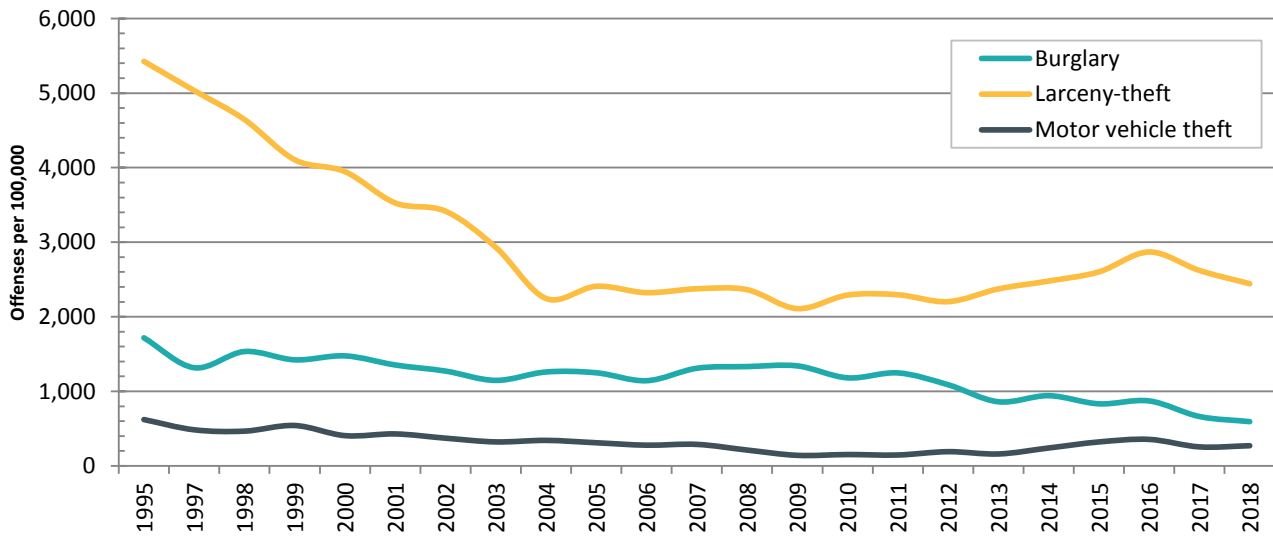
Source: FBI UCR

Index of Property and Violent Crimes in Tallahassee MSA

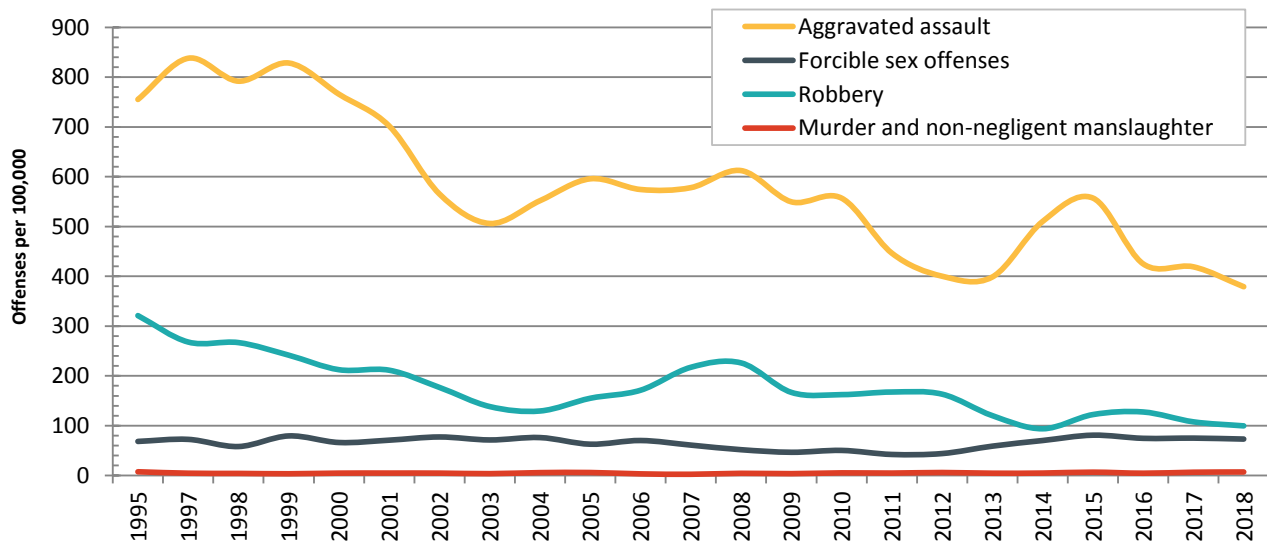


Trend: On a per capita basis, the overall frequency of property and violent crimes in the Tallahassee MSA in the 2010s has been lower than during the 1990s.

Index of Property Crime Offenses in Tallahassee MSA



Index of Violent Crime Offenses in Tallahassee MSA





Community and Environment
Public Safety:
Leon County Crime Rate

Trend: On a per capita basis, the overall frequency of property and violent crimes in Leon County in the 2010s has been lower than during the 1990s.

Year	Leon County Property Crime Rate	Florida Property Crime Rate	Leon County Violent Crime Rate	Florida Violent Crime Rate
1995	8,469.5	6,561.5	1,152.5	1,035.0
1996	7,376.1	6,441.2	972.4	1,023.0
1997	7,345.6	6,273.1	1,198.9	998.6
1998	6,764.9	5,902.7	1,042.7	906.1
1999	6,034.4	5,257.1	1,072.2	814.7
2000	5,913.1	4,803.2	1,022.3	776.4
2001	5,687.8	4,781.9	968.8	770.2
2002	5,516.1	4,631.3	824.1	739.8
2003	4,871.2	4,436.5	708.4	701.8
2004	4,112.2	4,149.1	724.1	681.5
2005	4,149.6	3,974.9	746.2	679.1
2006	3,842.2	3,926.2	753.8	705.8
2007	4,026.1	3,989.2	790.8	685.8
2008	4,207.1	4,029.5	818.9	648.0
2009	3,929.0	3,792.7	718.3	586.6
2010	4,002.1	3,561.8	738.6	525.1
2011	4,301.8	3,550.9	712.3	501.7
2012	3,969.1	3,313.5	657.6	474.2
2013	4,061.8	3,151.2	630.8	460.0
2014	4,290.9	2,983.9	724.5	450.8
2015	4,464.9	2,871.3	829.7	455.3
2016	4,921.2	2,742.2	734.2	439.2
2017	4,143.5	2,571.8	658.9	417.7
2018	3,843.9	2,328.4	612.0	393.0
2019	3,272.5	2,168.7	573.0	382.4

Note: Offenses per 100,000. Property crimes include burglary, larceny, and motor vehicle theft. Violent crimes include murder, forcible sex offenses, robbery, and aggravated assault.

Source: Florida Department of Law Enforcement