



The Tallahassee-Leon County  
 21<sup>st</sup> Century Council  
*Quality of Life / Sustainability*  
**COMMUNITY INDICATOR**

**Quality of Life / Sustainability Segment:**  
 ECONOMIC PROGRESS PROFITS PROSPERITY  
 SOCIAL **PEOPLE**  
 ENVIRONMENTAL PLANET PLACE  
*governance ethics justice spirituality peace*  
**Title: Emergency Room Admissions**

**TMH Emergency Room Admissions**

**Indicator:**

Tallahassee Memorial Hospital (TMH) emergency room (ER) admissions of youth ages 17-20 and 21-24 with measurable blood alcohol levels (BALs) of less than 0.02, and up to 0.20 and above.

**Commentary:**

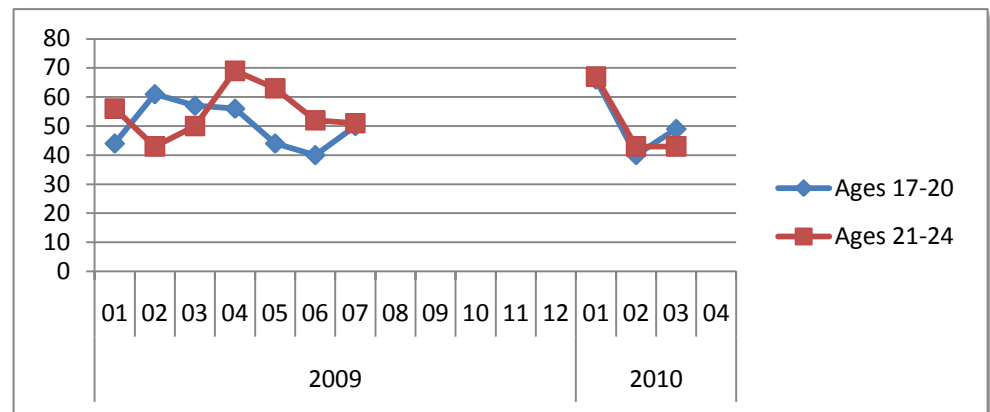
Tallahassee Memorial Hospital (TMH) reports that youth ages 17-20 have BALs when admitted to the emergency room at almost the same rate as legal drinking age 21-24 year olds. ER admissions of youth ages 17-20 with measurable BAL in the "toxic" range (0.20 and above) as a percentage of total BAL-related admissions was only slightly less than young adults 21-24; moreover, data was nearly identical in May 2009 and significantly higher in July 2009. Overall, of the young people admitted who had measurable BAL, an average of one in six 17-21 year olds and one in four 21-24 year olds had dangerously high (>0.20) BAL levels. It appears that alcohol is a contributing factor to accidents and injuries requiring ER visits as much for underage high school and college students as legal age young adults. Also, binge drinking to toxic levels appears to be a recurring problem for both age groups.

**Source(s):**

Tallahassee Memorial Hospital (TMH) Emergency Room Admissions Reports, January-July 2009 and January-March 2010.

*Note: August-December 2009 data was not provided.*

**Chart 1: TMH ER Admissions w/ Measurable BAL**



**Chart 2: % Measurable BAL >0.20 ("toxic")/ Total**

