



The Tallahassee-Leon County
21st Century Council
Quality of Life / Sustainability
COMMUNITY INDICATOR

Quality of Life / Sustainability Segment:
ECONOMIC PROGRESS PROFITS PROSPERITY
SOCIAL **PEOPLE**
ENVIRONMENTAL PLANET PLACE
governance ethics justice spirituality peace
Title: Drinking and Driving

Drinking and Driving

Indicator:

The rate of all alcohol-related motor vehicle traffic crashes; and the rate of Florida drinking and driving youth ages 15-29 in all motor vehicle crashes, and in fatal crashes, per licensed driver.

Analysis:

Leon County continues to have some of the highest alcohol-related motor vehicle crash rates statewide, and 21 continues to be the peak age for drinking drivers involved in all motor vehicle crashes, including fatalities. Yet, notably, the incidence of licensed drivers throughout Florida involved in all types of alcohol-related crashes, including fatal accidents, rises remarkably from age 15 to 19, makes some adjustment but continues to increase up through age 21 after which it declines sharply to age 24, and thereafter takes on a more gradual decline to age 29, and beyond. Clearly, youth ages 18-24 are at the highest risk for drinking and driving (and for associated consequences). At the same time, the alarming rise in youth ages 15-18 drinking and driving indicates the need to start responsible decision-making intervention strategies at the earliest possible age.

Source(s):

Traffic Crash Facts
<http://www.flhsmv.gov/html/safety.html>

Chart 1: Alcohol-Related Motor Vehicle Crashes

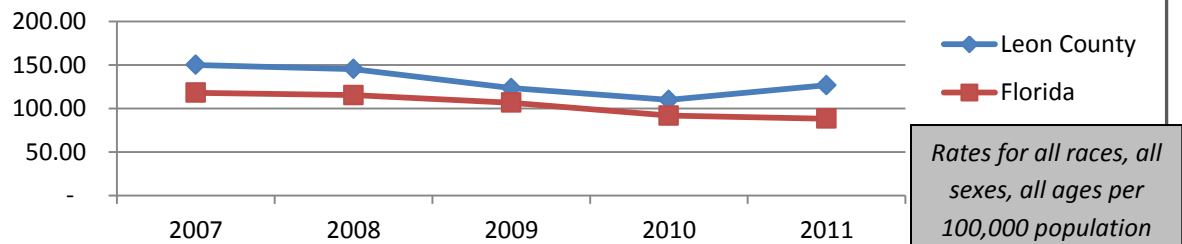


Chart 2: Florida Drinking Drivers, Ages 15-29

