



The Tallahassee-Leon County  
21<sup>st</sup> Century Council  
*Quality of Life / Sustainability*  
**COMMUNITY INDICATOR**

**Quality of Life / Sustainability Segment:**  
ECONOMIC PROGRESS PROFITS PROSPERITY  
SOCIAL **PEOPLE**  
ENVIRONMENTAL PLANET PLACE  
*governance ethics justice spirituality peace*  
**Title: School Graduation and Dropout Rates**

**School Graduation and Dropout Rates**

**Indicator:**

The percentage of students who have graduated within four years of entering ninth grade for the first time; and the percentage of dropouts calculated by dividing (a) the number of students in grades 9-12 for whom a dropout withdrawal reason was reported, by (b) the year’s total enrollment for grades 9-12.

**Commentary:**

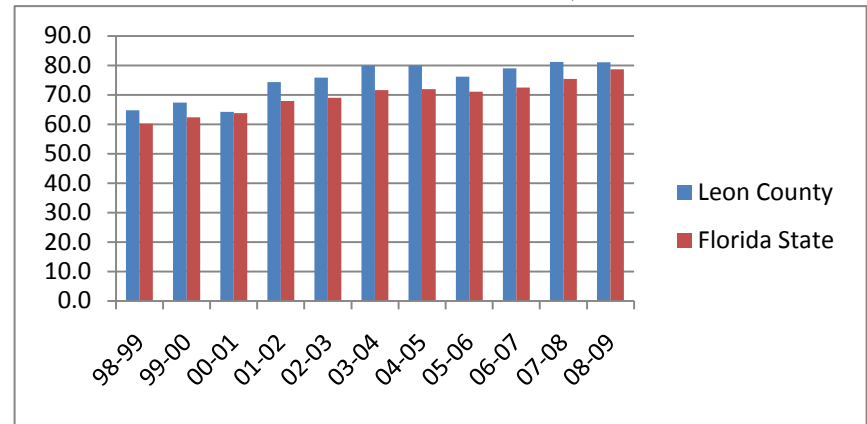
Leon County has typically had higher graduation rates and lower dropout rates than statewide averages since 1998 and 1996 respectively. Graduation rates for both Leon County and Florida have also generally been on an upward climb over the past decade. Dropout rates were at an all-time high in 1998-99 at 5.4% statewide and 4.0% for Leon County. The overall trend for state dropout rates is in decline, while Leon County has experienced more variation with a low of 1.9% in 2004-05 and ending 2008-09 at 3.0%, higher than the state average. In the 2008-09 school year graduation data constructs changed from one rate to a total of three: “regular rate, NGA rate and NCLB rate.” Data in Chart 1 used “regular rates” for multi-year comparisons.

**Source(s):**

Florida Department of Education (DOE) , Florida School Indicators Reports (FSIRs), <http://www.fldoe.org/eias/eiaspubs/fsir.asp>

*Note: Florida School Indicators Reports (FSIRs) for school, district and state data are published by Florida DOE each year. Archive data varies somewhat from more recent data, requiring re-organization and collation interventions. Analysis of data constructs and regular fact checking is recommended.*

**Chart 1: Graduation Rates, Leon and FL %**



**Chart 2: Dropout Rates, Leon and FL %**

