



The Tallahassee-Leon County
21st Century Council
Quality of Life / Sustainability
COMMUNITY INDICATOR

Quality of Life / Sustainability Segment:
ECONOMIC PROGRESS PROFITS PROSPERITY
SOCIAL **PEOPLE**
ENVIRONMENTAL PLANET PLACE
governance ethics justice spirituality peace
Title: School ACT and SAT Test Scores

School ACT and SAT Test Scores

Indicator:

The composite mean ACT (American College Test) and SAT (Scholastic Aptitude Test) scores, both widely used student aptitude tests for college placement and admission purposes. Beginning in 2006-07 the SAT score includes the addition of a writing subtest.

Commentary:

The Leon County School District has consistently had higher ACT and SAT test scores since 1996 compared to statewide averages. While state average ACT results have been in a more or less steady decline since 1997, Leon County has had more even results overall, ending in 2008-09 at 20.6 near the 1996-97 score of 20.8. SAT mean test scores changed abruptly in 2006 due to changes in SAT content and scoring, as noted in "Indicator." Thereafter, between 2006-07 and 2008-09 Leon County's SAT scores showed measurable improvement increasing by 29 points while statewide averages remained fairly constant with a negligible increase of only 2 points.

Source(s):

Florida Department of Education (DOE) , Florida School Indicators Reports (FSIRs), <http://www.fldoe.org/eias/eiaspubs/fsir.asp>

Note: Florida School Indicators Reports (FSIRs) for school, district and state data are published by Florida DOE each year. Archive data varies somewhat from more recent data, requiring re-organization and collation interventions. Regular fact checking is recommended.

Chart 1: ACT Composite Mean Test Scores

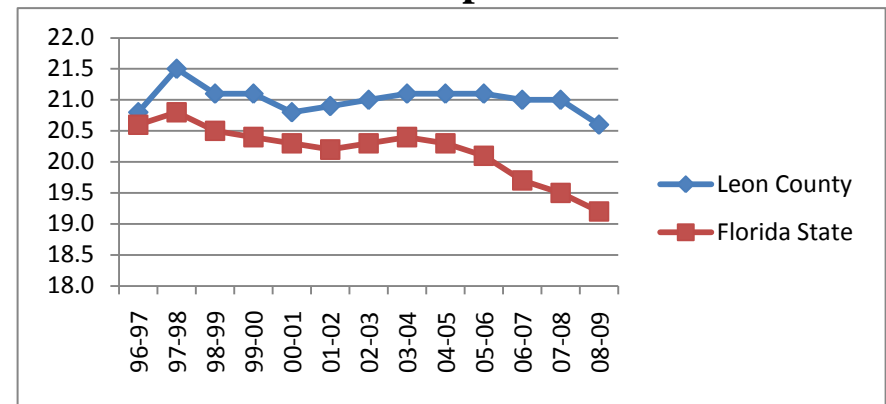


Chart 2: SAT Mean Test Scores

