



The Tallahassee-Leon County
21st Century Council
Quality of Life / Sustainability
COMMUNITY INDICATOR

Quality of Life / Sustainability Segment:
ECONOMIC PROGRESS PROFITS PROSPERITY
SOCIAL **PEOPLE**
ENVIRONMENTAL PLANET PLACE
governance ethics justice spirituality peace
Title: Students Suspended

Students Suspended

Indicator:

The percentage of unduplicated Leon County middle and high school students from the total enrollment who served in-school and out-of-school suspensions during the school year; plus overall suspension rates for all schools in Leon County and in Florida.

Commentary:

The percentage of students suspended from all schools, both in-school and out-of-school, statewide has remained fairly constant since 1996. Leon County’s out-of-school suspensions for all schools have also remained reasonably steady over the same timeframe at slightly below the state average. Leon County in-school suspensions have experienced more increases and fluctuations – rising overall from a mere 1.2% to a high of 11.2% in 2006-07 with a high school and middle school peak in 2007-08. While there have been declines in the most recent data, it is still considerably higher than the very low rates of 1996-99 when fewer in-school suspension alternatives were available.

Source(s):

Florida Department of Education (DOE) , Florida School Indicators Reports (FSIRs), <http://www.fldoe.org/eias/eiaspubs/fsir.asp>

***Note:** Florida School Indicators Reports (FSIRs) for school, district and state data are published by Florida DOE each year. Archive data varies somewhat from more recent data, requiring re-organization and collation interventions. Regular fact checking is recommended.*

Chart 1: % Out-of-School Suspensions

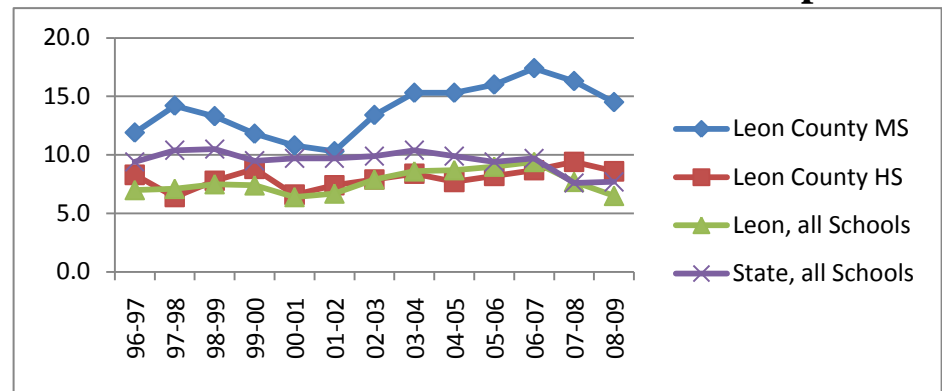


Chart 2: % In-School Suspensions

